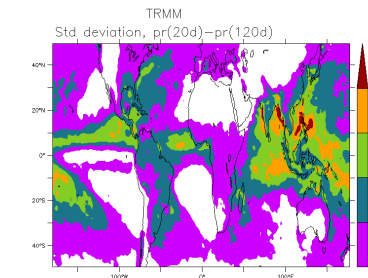
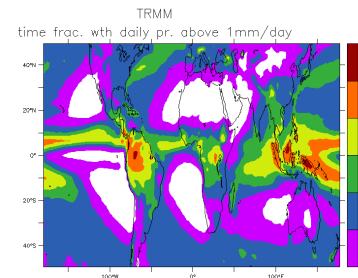


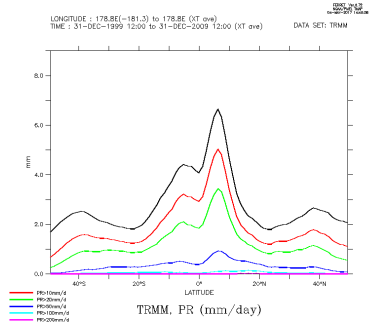
TRMM\_hf



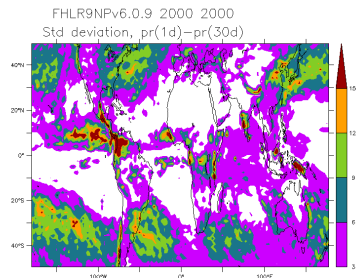
TRMM\_is



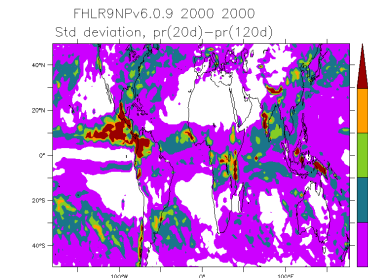
TRMM\_nd



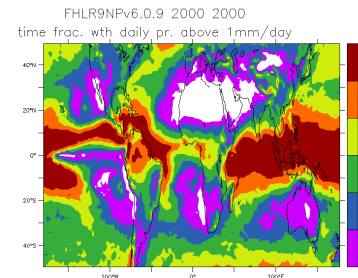
TRMM\_zon



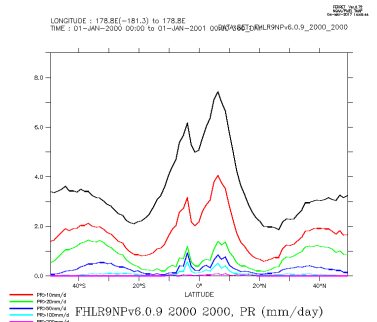
FHLR9NPv6.0.9\_2000\_2000\_hf



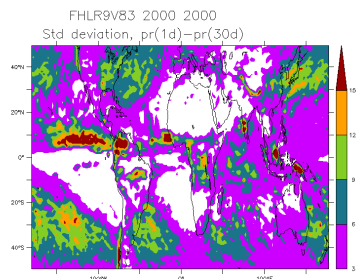
FHLR9NPv6.0.9\_2000\_2000\_is



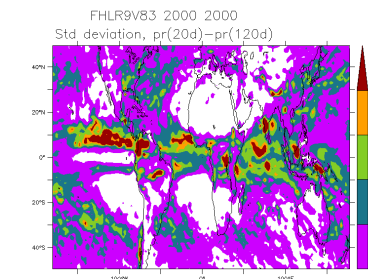
FHLR9NPv6.0.9\_2000\_2000\_nd



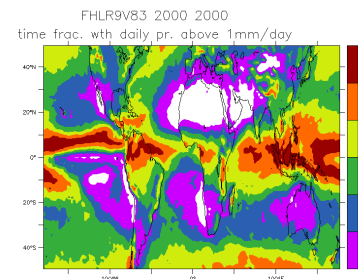
FHLR9NPv6.0.9\_2000\_2000\_zon



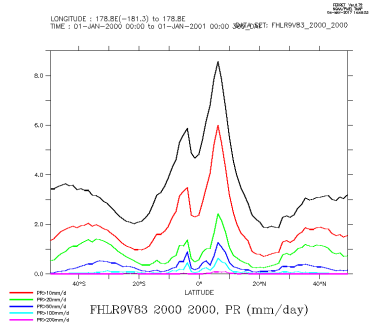
FHLR9V83\_2000\_2000\_hf



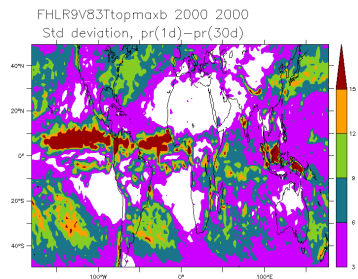
FHLR9V83\_2000\_2000\_is



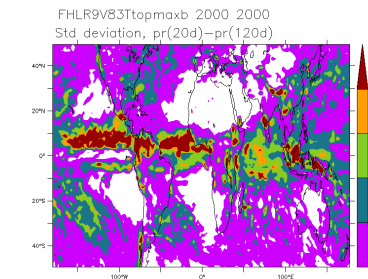
FHLR9V83\_2000\_2000\_nd



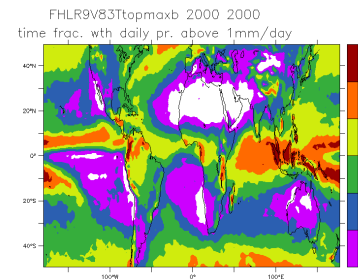
FHLR9V83\_2000\_2000\_zon



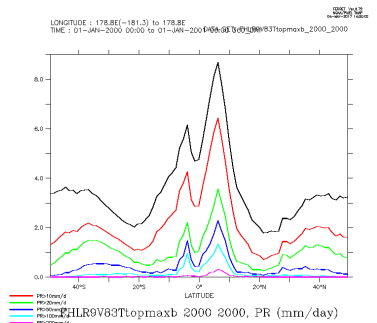
FHLR9V83Topmaxb\_2000\_2000\_hf



FHLR9V83Topmaxb\_2000\_2000\_is

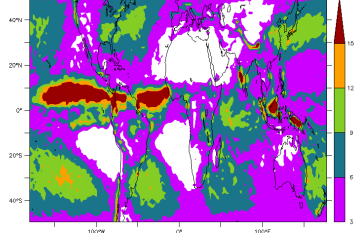


FHLR9V83Topmaxb\_2000\_2000\_nd



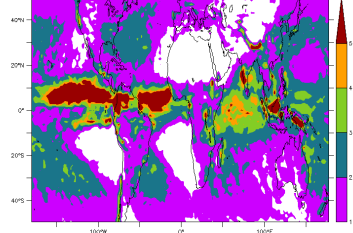
FHLR9V83Topmaxb\_2000\_2000\_zon

FHLR9V83Ttopmaxb 2001 2006  
Std deviation, pr(1d)-pr(30d)



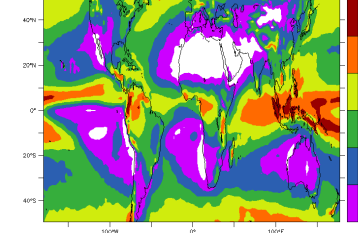
FHLR9V83Ttopmaxb\_2001\_2006\_hf

FHLR9V83Ttopmaxb 2001 2006  
Std deviation, pr(20d)-pr(120d)



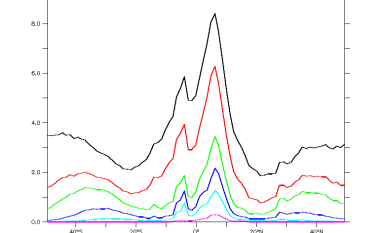
FHLR9V83Ttopmaxb\_2001\_2006\_is

FHLR9V83Ttopmaxb 2001 2006  
time frac. wth daily pr. above 1mm/day



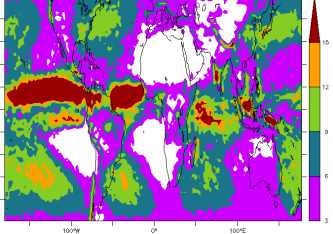
FHLR9V83Ttopmaxb\_2001\_2006\_nd

LONGITUDE : 178.8E - 181.3 to 179.8E  
TIME : 01-JAN-2001 00:00 to 01-JAN-2007 00:00  
FHLR9V83Ttopmaxb\_2001\_2006



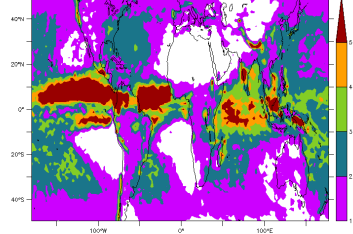
FHLR9V83Ttopmaxb\_2001\_2006\_zon

FHLR9V83Ttopmaxbwd110 2001 2006  
Std deviation, pr(1d)-pr(30d)



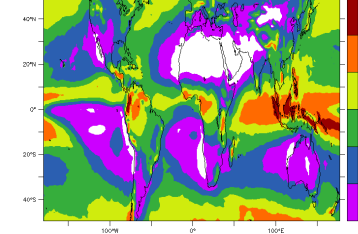
FHLR9V83Ttopmaxbwd110\_2001\_2006\_hf

FHLR9V83Ttopmaxbwd110 2001 2006  
Std deviation, pr(20d)-pr(120d)



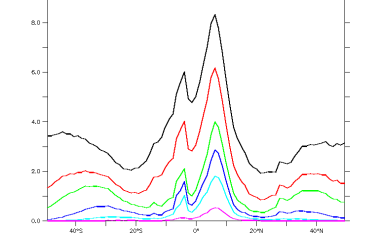
FHLR9V83Ttopmaxbwd110\_2001\_2006\_is

FHLR9V83Ttopmaxbwd110 2001 2006  
time frac. wth daily pr. above 1mm/day



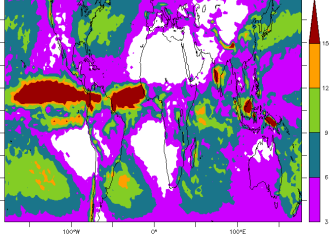
FHLR9V83Ttopmaxbwd110\_2001\_2006\_nd

LONGITUDE : 178.8E - 181.3 to 179.8E  
TIME : 01-JAN-2001 00:00 to 01-JAN-2007 00:00  
FHLR9V83Ttopmaxbwd110\_2001\_2006



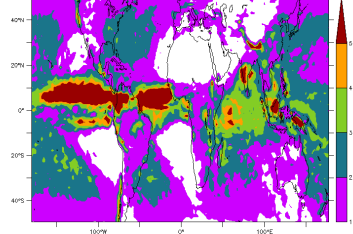
FHLR9V83Ttopmaxbwd110\_2001\_2006\_zon

FHLR9V83Ttopmaxbwd310 2001 2006  
Std deviation, pr(1d)-pr(30d)



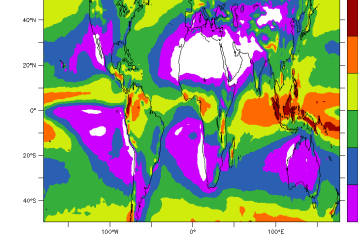
FHLR9V83Ttopmaxbwd310\_2001\_2006\_hf

FHLR9V83Ttopmaxbwd310 2001 2006  
Std deviation, pr(20d)-pr(120d)



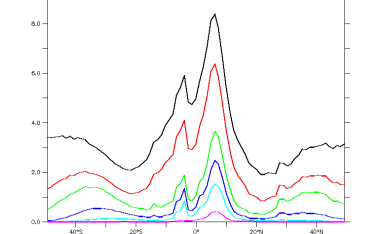
FHLR9V83Ttopmaxbwd310\_2001\_2006\_is

FHLR9V83Ttopmaxbwd310 2001 2006  
time frac. wth daily pr. above 1mm/day



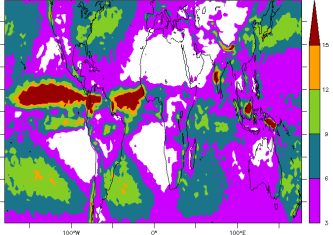
FHLR9V83Ttopmaxbwd310\_2001\_2006\_nd

LONGITUDE : 178.8E - 181.3 to 179.8E  
TIME : 01-JAN-2001 00:00 to 01-JAN-2007 00:00  
FHLR9V83Ttopmaxbwd310\_2001\_2006



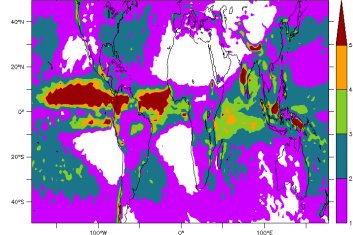
FHLR9V83Ttopmaxbwd310\_2001\_2006\_zon

FHLR9V83Ttopmaxbthh 2001 2006  
Std deviation, pr(1d)-pr(30d)



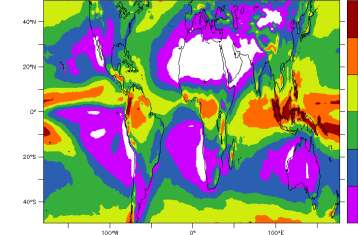
FHLR9V83Ttopmaxbthh\_2001\_2006\_hf

FHLR9V83Ttopmaxbthh 2001 2006  
Std deviation, pr(20d)-pr(120d)



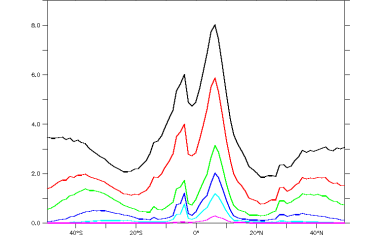
FHLR9V83Ttopmaxbthh\_2001\_2006\_is

FHLR9V83Ttopmaxbthh 2001 2006  
time frac. wth daily pr. above 1mm/day

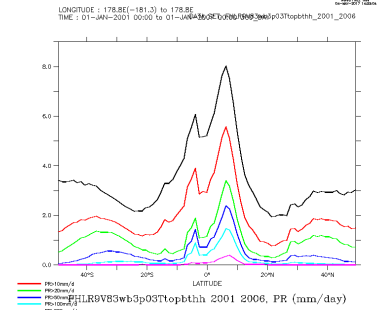
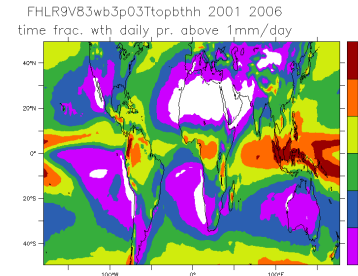
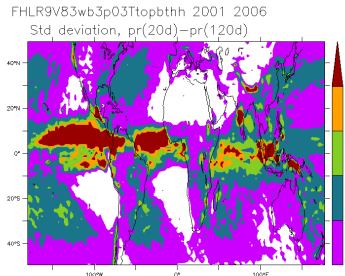
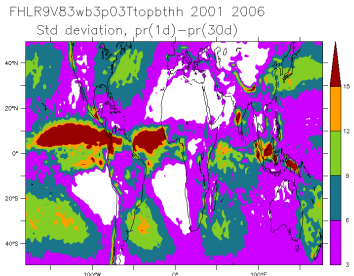


FHLR9V83Ttopmaxbthh\_2001\_2006\_nd

LONGITUDE : 178.8E - 181.3 to 179.8E  
TIME : 01-JAN-2001 00:00 to 01-JAN-2007 00:00  
FHLR9V83Ttopmaxbthh\_2001\_2006



FHLR9V83Ttopmaxbthh\_2001\_2006\_zon

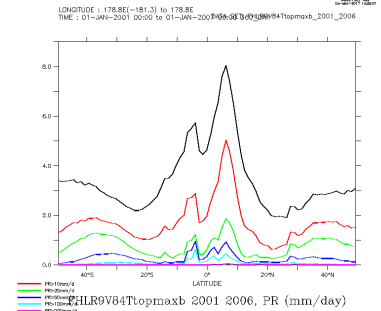
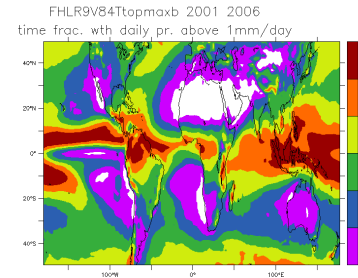
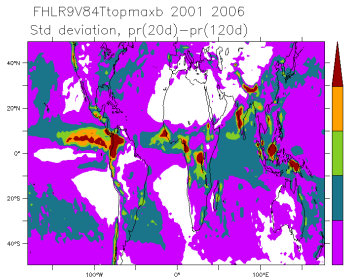
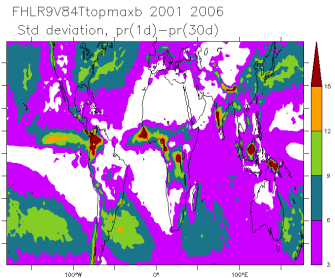


FHLR9V83wb3p03Ttopbthh\_2001\_2006\_hf

FHLR9V83wb3p03Ttopbthh\_2001\_2006\_is

FHLR9V83wb3p03Ttopbthh\_2001\_2006\_nd

FHLR9V83wb3p03Ttopbthh\_2001\_2006\_zon

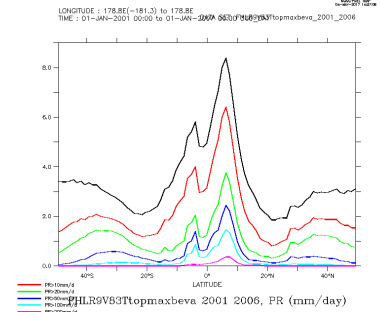
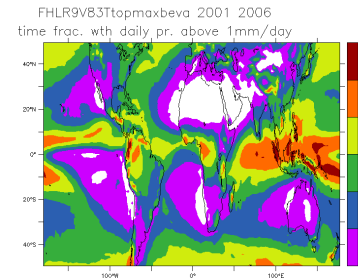
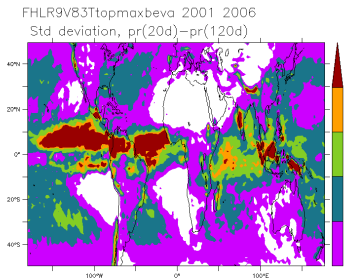
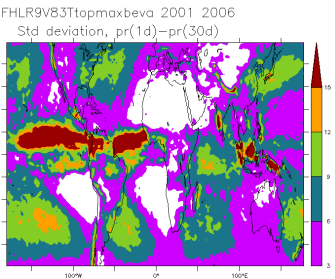


FHLR9V84Ttopmaxb\_2001\_2006\_hf

FHLR9V84Ttopmaxb\_2001\_2006\_is

FHLR9V84Ttopmaxb\_2001\_2006\_nd

FHLR9V84Ttopmaxb\_2001\_2006\_zon

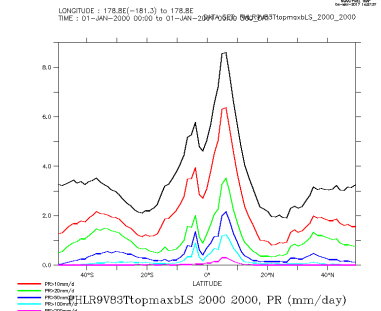
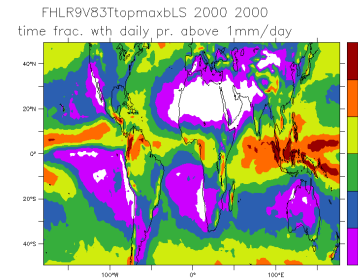
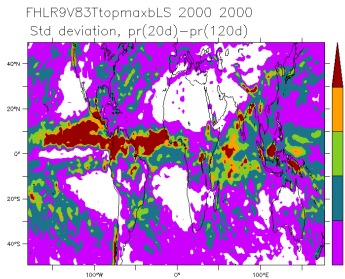
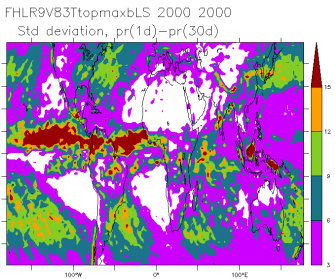


FHLR9V83Ttopmaxbeva\_2001\_2006\_hf

FHLR9V83Ttopmaxbeva\_2001\_2006\_is

FHLR9V83Ttopmaxbeva\_2001\_2006\_nd

FHLR9V83Ttopmaxbeva\_2001\_2006\_zon



FHLR9V83TtopmaxbLS\_2000\_2000\_hf

FHLR9V83TtopmaxbLS\_2000\_2000\_is

FHLR9V83TtopmaxbLS\_2000\_2000\_nd

FHLR9V83TtopmaxbLS\_2000\_2000\_zon