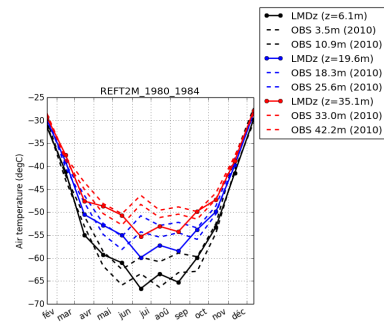
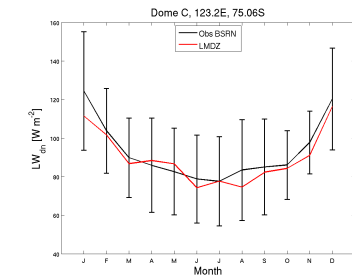


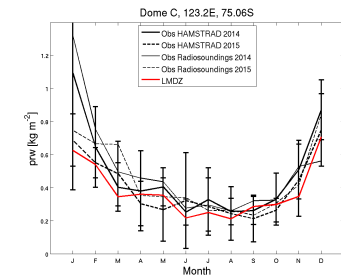
temp_DC_REFT2M_1980.1984



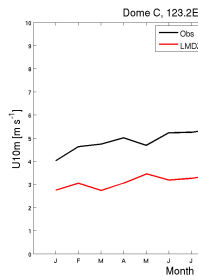
tempDC-REFT2M_1980_1984



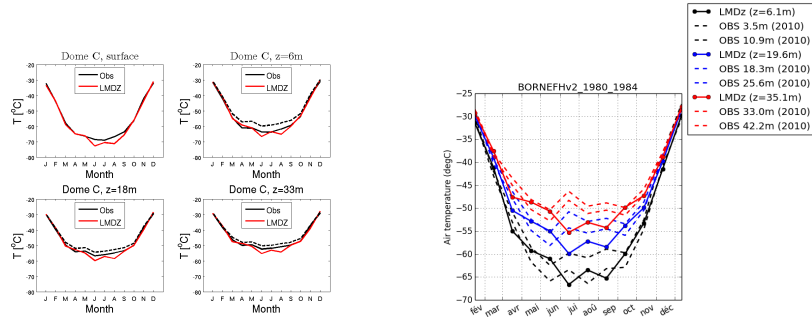
LWdnSFC_DC_REFT2M_1980_1984



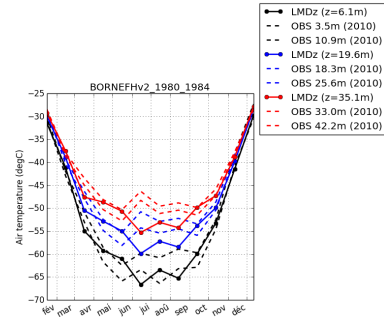
prw_DC_REFT2M_1980.1984



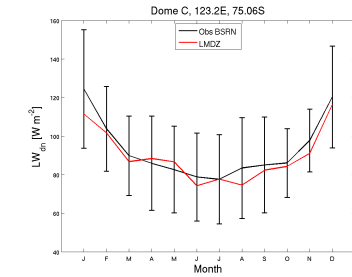
wind10m_DC_REFT2M_1980.1984



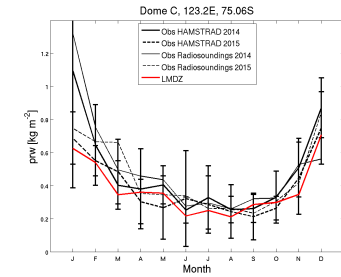
temp_DC_BORNEFHv2_1980.1984



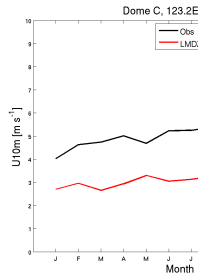
tempDC-BORNEFHv2_1980.1984



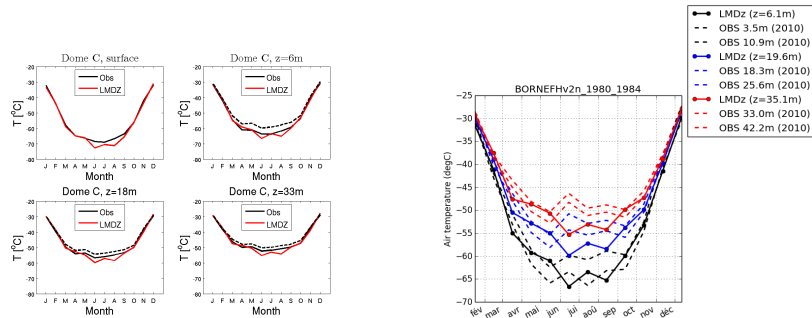
LWdnSFC_DC_BORNEFHv2_1980.1984



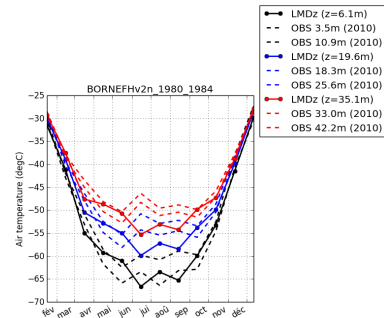
prw_DC_BORNEFHv2_1980.1984



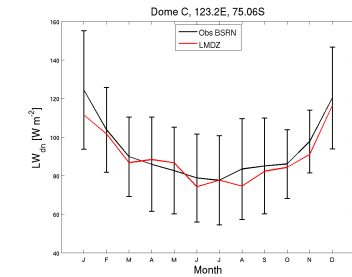
wind10m_DC_BORNEFHv2_1980.1984



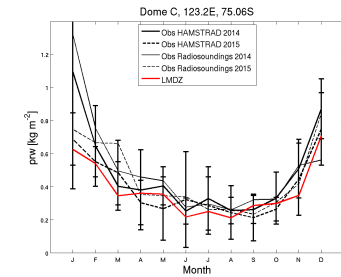
temp_DC_BORNEFHv2n_1980.1984



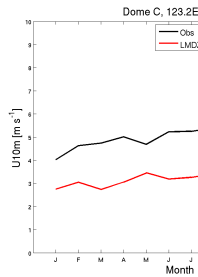
tempDC-BORNEFHv2n_1980.1984



LWdnSFC_DC_BORNEFHv2n_1980.1984



prw_DC_BORNEFHv2n_1980.1984



wind10m_DC_BORNEFHv2n_1980.1984